

Standard Specifications



Model			NISE10(vacuum pressure)	NISE10F(compound pressure)	NISE100 (positive pressure)
Rated pressure range			0.0~101.0kPa	-100.0~100.0kPa	-100.0~1.000MPa
Display/Set pressure range			10.0~105.0kPa	-105.0~105.0kPa	-105.0~1.050MPa
Withstand pressure			500kPa	500kPa	1.5MPa
Display/Minimum unit setting			0.1kPa	0.1kPa	0.001MPa
Fluid			Air, Non-corrosive gas, Non-flammable gas		
Power supply voltage			12 to 24 VDC ±10%, Ripple (p-p) 10% or less (With power supply polarity protection)		
Current consumption			40 mA or less		
Switch output			NPN or PNP open collector 2 outputs		
	Maximum load current		80mA		
	Maximum applied voltage		28 V (With NPN output)		
	Residual voltage		2 V or less (With load current of 80 mA)		
	Response time		2.5 ms or less (Response time selections with anti-chattering function: 20, 100, 500, 1000, 2000 ms)		
	Short circuit protection		Yes		
Repeat accuracy			±0.2%F.S.±1digit		
Hysteresis	Hysteresis mode		Variable (0 or above) ^{Note)}		
	Window comparator mode				
Analog output	Voltage output	Output voltage (Rated pressure range)	1~5V±2.5%F.S.		0.6~5V±2.5%F.S.
		Linearity	±1%F.S.		
		Output impedance	Approx. 1 kΩ		
Display			3 1/2 digit, 7-segment indicator, 1-color display (Red)		
Display accuracy			±2% F.S. ±1 digit (at 25°C ±3°C ambient temperature)		
Indicator light			Lights up when output is turned ON. OUT1: Green OUT2: Red		
Environment	Enclosure		IP40		
	Operating temperature range		Operating: -5 to 50°C, Stored: -10 to 60°C (No freezing or condensation)		
	Operating humidity range		Operating and stored: 35 to 85% RH (No condensation)		
	Withstand voltage		AC1000V for 1 minute between terminals and housing		
	Insulation resistance		50 MΩ or more (500 VDC measured via megohmmeter) between terminals and housing		
	Vibration resistance		10 ~ 150Hz, the smaller of full amplitude 1.5mm or 20m / S 2, 2 hours in all directions of XYZ		
	Impact resistance		100m/s ² Three circuits in all directions of XYZ (without power supply)		
Lead wire with connector			±2% F.S. (at 25°C in an operating range of -5 to 50°C)		
Temperature characteristics			Oilproof heavy-duty vinyl cable 5 cores, ø3.5, 2 m, Conductor area: 0.15 mm2 (AWG26) Insulator O.D.: 1.0 mm		
Standards			CE marking,RoHS,UL/CSA		

Note) If the applied pressure fluctuates around the set-value, the hysteresis must be set to a value more than the fluctuating width, otherwise chattering will occur.

Piping Specifications

Model		M5	M5
Port size		M5×0.8 (Side ported)	M5×0.8 (Rear ported)
Wetted part material	Sensor pressure receiving area	Sensor pressure receiving area: Silicon	
	Piping port	C3604 (Electroless nickel plating) O-ring: HNBR	
Weight	With lead wire with connector (5 cores, 2 m)	55g	
	Without lead wire with connector	15g	

Standard Specifications

● Rated pressure range
NISE10 -0.100~1.000MPa

For positive pressure **NISE10** - **M5** - **A** - **M**

For vacuum/compound pressure **NZSE10** - **M5** - **B** - **M**

Rated pressure range
NISE10 0.0~-101.0KPa
NISE10F -100.0~-100KPa

Piping specifications

M5	M5 female thread/Side ported Piping port	
M5R	M5 female thread/Rear ported Piping port	

※Made to Order

Output specifications

A	NPN open collector 2 outputs
B	PNP open collector 2 outputs
C	NPN open collector 1 output + Analog voltage
E	PNP open collector 1 output + Analog voltage

※Made to Order

Unit specifications

Nil	With unit switching function
M	Fixed SI unit <small>Note 1)</small>
P	With unit switching function (Initial value psi)

Note 1) Unit: kPa, Mpa

Option 1

Nil	Without lead wire	
G	Lead wire with connector (Lead wire length: 2 m) With connector cover	

Option 2

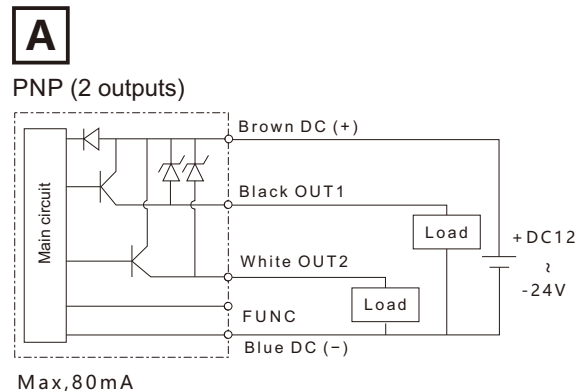
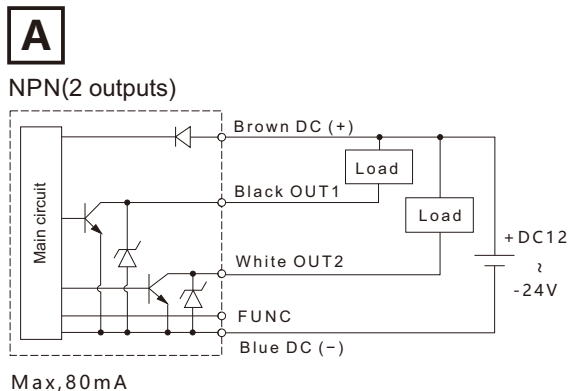
Nil	None
D	Panel mount adapter + Front protective cover
R	DIN rail adapter <small>Note 2)</small>

Note 2) Not available for piping specifications of 01 and N01.

Internal Circuits and Wiring Examples

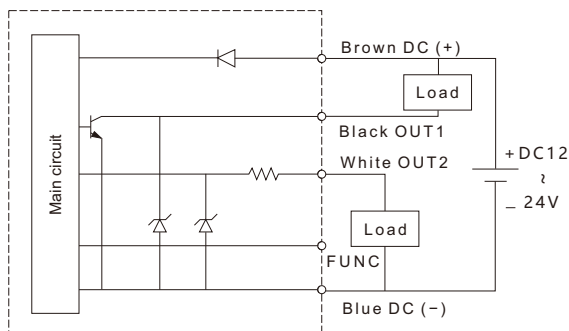
NZSE10(F)/NISE10 - - -

● Output type



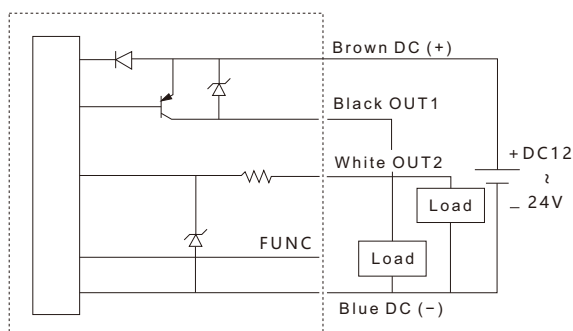
C

NPN (1 output) + Analog voltage output



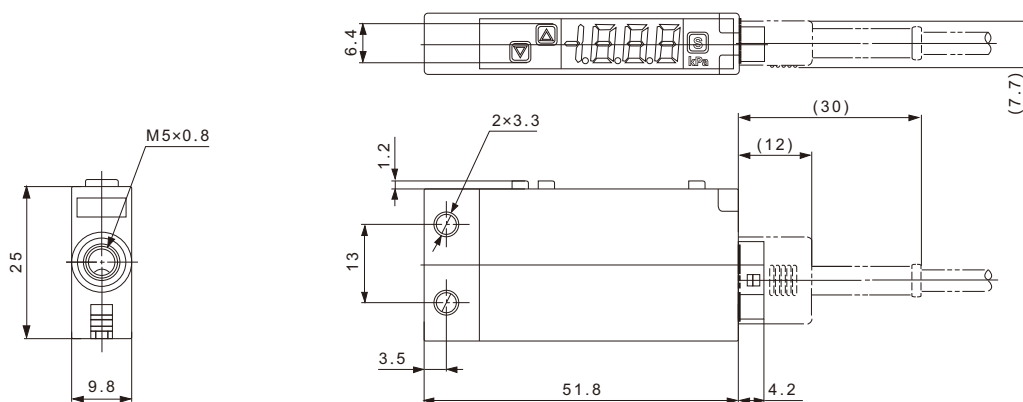
E

PNP (1 output) + Analog voltage output



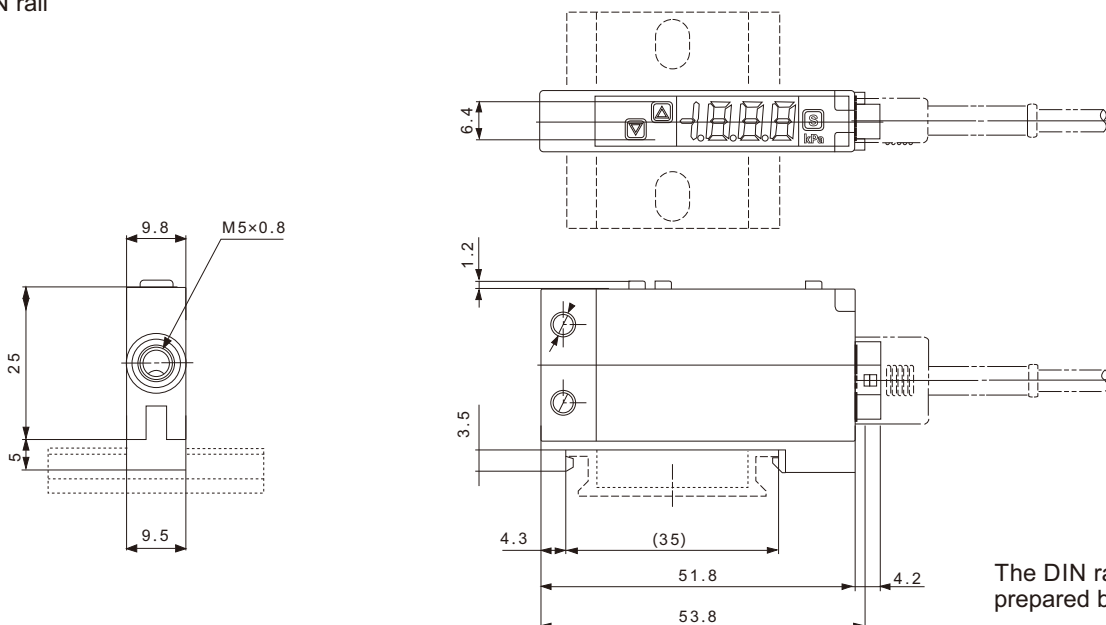
Dimensions

NZSE10(F)/NISE10-M5-□-□□□□



NZSE10(F)/NISE10-M5-□-□□ R □

With DIN rail



The DIN rail needs to be prepared by the customer.