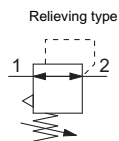
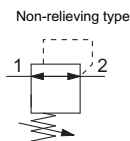




### Symbol



Relieving type



Non-relieving type

Note) A standard model is equipped with a backflow function. A main valve opens when the inlet pressure is released, and then an outlet pressure backflows into the inlet side.

### Standard Specifications

Model		NARM5S
Regulator construction		Direct acting
Working principle		Piston type
Relief mechanism	Standard	Relieving type
	Semi-standard	Non-relieving type
Backflow function		Within (Unbalanced type)
IN side tubing O.D.		ø4, ø6, ø5/32", ø1/4"
OUT side tubing O.D.		ø4, ø6, ø5/32", ø1/4"
Proof pressure		1.5 MPa
Maximum operating pressure		1.0 MPa
Set pressure range	Standard	0.05 to 0.7 MPa
	Semi-standard	0.05 to 0.35 MPa (Low pressure type)
Fluid		Air
Ambient and fluid temperature		5 to 60°C

Note) 0.1 MPa or greater set pressure is required when used in the reverse flow.

### Standard Specifications

NARM5 S A - 07 - [ ] [ ] [ ]

Single unit type

#### Regulator Mounting

Symbol	A	B
How to mount	Direct mount	DIN rail mount <sup>Note)</sup>
Appearance		

Note) Both the square nut and the hexagon socket head screw are attached for the DIN rail mount type. (DIN rail is not attached.)

#### Unit Representation

Symbol	Description
Nil	Display unit for product name plate and pressure gauge: MPa
Z <sup>Note)</sup>	Display unit for product name plate and pressure gauge: psi

Note) This option is available for use outside Japan only. (The SI units must be used in Japan.)

#### Semi-standard

Symbol	None	0.35 MPa setting <sup>Note)</sup>	Non-relieving
Nil	•		
1		•	
2			•
3		•	•

Note) A pressure gauge with a full span of 0.8 MPa is attached.

#### Accessory

Symbol	Accessory
Nil	Without pressure gauge
A	With pressure gauge

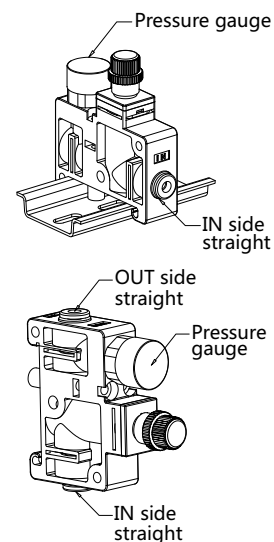
#### IN/OUT Fitting Type

##### Metric size

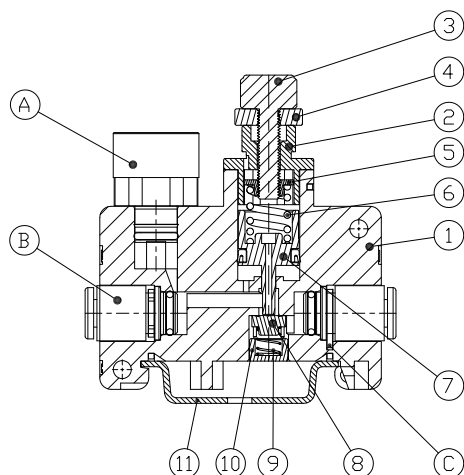
Mounting position	IN side				OUT side			
	Straight		Elbow		Straight		Elbow	
Fitting type								
Symbol	ø4	ø6	ø4	ø6	ø4	ø6	ø4	ø6
06	•				•			
07		•			•			
08		•				•		
18			•				•	
19				•			•	
20				•				•
25	•						•	
26		•					•	
27		•						•
32			•		•			
33				•	•			
34				•		•		

##### Inch size

Mounting position	IN side				OUT side			
	Straight		Elbow		Straight		Elbow	
Fitting type								
Symbol	ø5/32	ø1/4	ø5/32	ø1/4	ø5/32	ø1/4	ø5/32	ø1/4
56	•				•			
57		•			•			
58		•				•		
68			•				•	
69				•			•	
70				•				•
75	•						•	
76		•					•	
77		•						•
82			•		•			
83				•	•			
84				•		•		



### Construction



### Component Parts

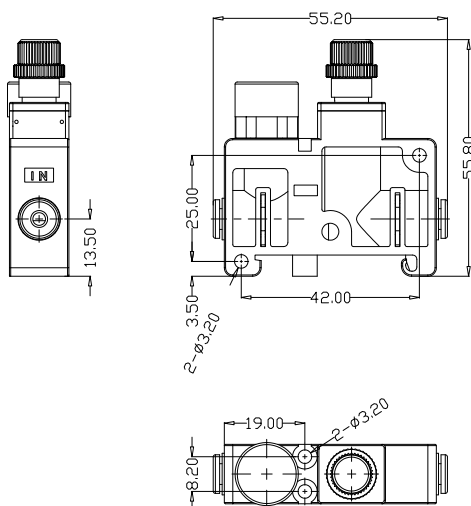
No.	Description	Material
1	Body (for individual supply)	PBT
2	Bonnet	PBT
3	Knob	POM
4	Valve	HNBR, Aluminum alloy
5	Piston assembly	POM, NBR
6	Adjusting screw assembly	—
7	Adjusting spring	Stainless steel
8	Valve spring	Stainless steel
9	Valve guide	Brass, With electroless nickel plated

### Replacement Parts

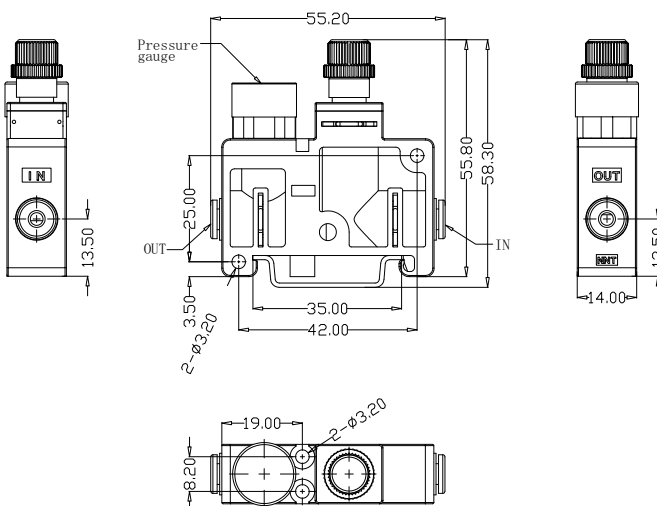
No.	Description	Material	Qty.
A	Fitting assembly	—	2
B	Port plug	PBT, HNBR	1
C	Clip	Stainless steel	3

### Dimensions

**NARM5SA**  
Individual supply type  
(Direct mount)



**NARM5SB**  
Individual supply type  
(DIN rail mount)



Fitting size	IN side				OUT side			
	Straight R	Elbow S	Elbow T	Elbow U	Straight V	Elbow W	Elbow X	Elbow Y
ø4, ø5/32	2.5	6	11	35.5	2.5	6	11	35.5
ø6	3	6.5	11	36	3	6.5	11	36
ø1/4	6.5	6	11.5	38.5	6.5	6	11.5	38.5

Fitting size	IN side				OUT side			
	Straight R	Elbow S	Elbow T	Elbow U	Straight V	Elbow W	Elbow X	Elbow Y
ø4, ø5/32	2.5	6	11	37.5	2.5	6	11	37.5
ø6	3	6.5	11	38	3	6.5	11	38
ø1/4	6.5	6	11.5	40.5	6.5	6	11.5	40.5